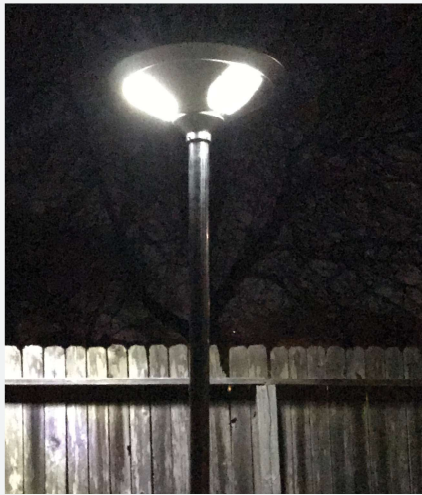


# Intelligent Solar Lighting Catalog

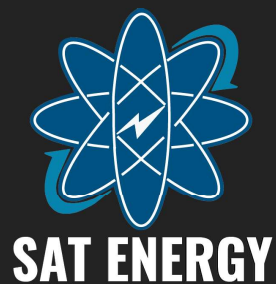


# PMA USA SUPPLY LLC.



In accordance with the Strategic Alliance Agreement between PMA USA Supply LLC. and SAT Energy Inc., PMA USA Supply LLC. is an authorized distributor of SAT Energy solar LED lighting products. SAT Energy Inc. has permitted PMA USA Supply LLC. permission to display and showcase SAT Energy solar LED lighting products on behalf of SAT Energy Inc.





# Available Solar LED Wattages By Style

## Style 1

5W, 15W, 20W, 30W, 40W  
50W, 60W, 70W, 80W, 100W



## Style 2

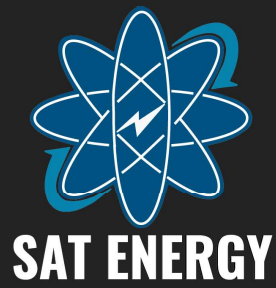
10W, 20W, 30W, 50W, 80W



## Security Light

15W, 20W, 30W,  
40W, 50W, 60W





## Available Solar LED Wattages By Style

### Resilient Solar Hog Light

5W



### 360° Style 1

15W, 20W, 30W



### 360° Style 2

15W



# 5W Style 1 Intelligent Solar LED Light

## Technical Specifications



### Product Size

Product Size in (in)	17 in x 13 in x 5 in
Product Weight in (lbs)	11 lbs

### Product Features

Product Material	Aluminum Alloy
Infrared Motion Sensor	Yes
LED Light Remote Control Activation	No
Working Temperature Range	-22° to 158° F
Certificate	CE / ROHS / IP65
Product Warranty	5 Years

### Solar Panel

Solar Panel	18V
Max Power	10W
Solar Panel Lifetime	25 Years
Lithium Battery	12V / 4AH
Battery Lifetime	5 Years

### LED Light

LED Lamp	12V
Max Power	5W
LED Chip Brand	Epistar
Lumens (lm)	625 - 675lm
Color Temperature	6000K - 6500K
Life time (hours)	100,000

### Solar Charge and Lighting Radius

Viewing Angle	120°
Charge Time By Sun (hours)	6
Full-Power Discharge Time (hours)	>24
Half-Power Discharge Time (hours)	>48
Recommended Mounting Pole Height in (ft)	8 ft - 12 ft
Recommended Spacing Between Lights (ft)	23 ft - 30 ft
Radius of Area Lit	300ft <sup>2</sup>

The following data technical sheet contains general descriptions and statistics of the stated product mentioned above. SAT Energy Inc. is not liable nor responsible for any misinterpretation of the following data technical sheet. It is the responsibility of the user to review over the data technical sheet to evaluate and determine whether the stated product will match with the needs of the user.



# 15W Style 1 Intelligent Solar LED Light

## Technical Specifications



### Product Size

Product Size in (in)	26 in x 13 in x 5 in
Product Weight in (lbs)	20 lbs

### Product Features

Product Material	Aluminum Alloy
Infrared Motion Sensor	Yes
LED Light Remote Control Activation	No
Working Temperature Range	-22° to 158° F
Certificate	CE / ROHS / IP65
Product Warranty	5 Years

### Solar Panel

Solar Panel	18V
Max Power	30W
Solar Panel Lifetime	25 Years
Lithium Battery	12V / 21AH
Battery Lifetime	5 Years

### LED Light

LED Lamp	12V
Max Power	15W
LED Chip Brand	Epistar
Lumens (lm)	1,875 - 2,025lm
Color Temperature	6000K - 6500K
Life time (hours)	100,000

### Solar Charge and Lighting Radius

Viewing Angle	120°
Charge Time By Sun (hours)	6
Full-Power Discharge Time (hours)	>48
Half-Power Discharge Time (hours)	>72
Recommended Mounting Pole Height in (ft)	13 ft - 20 ft
Recommended Spacing Between Lights (ft)	45 ft - 55 ft
Radius of Area Lit	678ft <sup>2</sup>

The following data technical sheet contains general descriptions and statistics of the stated product mentioned above. SAT Energy Inc. is not liable nor responsible for any misinterpretation of the following data technical sheet. It is the responsibility of the user to review over the data technical sheet to evaluate and determine whether the stated product will match with the needs of the user.



# 20W Style 1 Intelligent Solar LED Light

## Technical Specifications



### Product Size

Product Size in (in)	36 in x 13 in x 5 in
Product Weight in (lbs)	30 lbs

### Product Features

Product Material	Aluminum Alloy
Infrared Motion Sensor	Yes
LED Light Remote Control Activation	Yes
Working Temperature Range	-22° to 158° F
Certificate	CE / ROHS / IP65
Product Warranty	5 Years

### Solar Panel

Solar Panel	18V
Max Power	45W
Solar Panel Lifetime	25 Years
Lithium Battery	12V / 21AH
Battery Lifetime	5 Years

### LED Light

LED Lamp	12V
Max Power	20W
LED Chip Brand	Bridgelux
Lumens (lm)	2,500 - 2,700lm
Color Temperature	6000K - 6500K
Life time (hours)	100,000

### Solar Charge and Lighting Radius

Viewing Angle	120°
Charge Time By Sun (hours)	6
Full-Power Discharge Time (hours)	>48
Half-Power Discharge Time (hours)	>72
Recommended Mounting Pole Height in (ft)	13 ft - 20 ft
Recommended Spacing Between Lights (ft)	45 ft - 65 ft
Radius of Area Lit	775ft <sup>2</sup>

The following data technical sheet contains general descriptions and statistics of the stated product mentioned above. SAT Energy Inc. is not liable nor responsible for any misinterpretation of the following data technical sheet. It is the responsibility of the user to review over the data technical sheet to evaluate and determine whether the stated product will match with the needs of the user.



# 30W Style 1 Intelligent Solar LED Light

## Technical Specifications



### Product Size

Product Size in (in)	46 in x 13 in x 5 in
Product Weight in (lbs)	40 lbs

### Product Features

Product Material	Aluminum Alloy
Infrared Motion Sensor	Yes
LED Light Remote Control Activation	Yes
Working Temperature Range	-22° to 158° F
Certificate	CE / ROHS / IP65
Product Warranty	5 Years

### Solar Panel

Solar Panel	18V
Max Power	50W
Solar Panel Lifetime	25 Years
Lithium Battery	12V / 27AH
Battery Lifetime	5 Years

### LED Light

LED Lamp	12V
Max Power	40W
LED Chip Brand	Bridgelux
Lumens (lm)	3,750 - 4,050lm
Color Temperature	6000K - 6500K
Life time (hours)	100,000

### Solar Charge and Lighting Radius

Viewing Angle	120°
Charge Time By Sun (hours)	6
Full-Power Discharge Time (hours)	>48
Half-Power Discharge Time (hours)	>72
Recommended Mounting Pole Height in (ft)	23 ft - 26 ft
Recommended Spacing Between Lights (ft)	60 ft - 65 ft
Radius of Area Lit	1,431ft <sup>2</sup>

The following data technical sheet contains general descriptions and statistics of the stated product mentioned above. SAT Energy Inc. is not liable nor responsible for any misinterpretation of the following data technical sheet. It is the responsibility of the user to review over the data technical sheet to evaluate and determine whether the stated product will match with the needs of the user.





# 40W Style 1 Intelligent Solar LED Light

## Technical Specifications



### Product Size

Product Size in (in)	46 in x 15 in x 5 in
Product Weight in (lbs)	42 lbs

### Product Features

Product Material	Aluminum Alloy
Infrared Motion Sensor	Yes
LED Light Remote Control Activation	Yes
Working Temperature Range	-22° to 158° F
Certificate	CE / ROHS / IP65
Product Warranty	5 Years

### Solar Panel

Solar Panel	18V
Max Power	60W
Solar Panel Lifetime	25 Years
Lithium Battery	12V / 30AH
Battery Lifetime	5 Years

### LED Light

LED Lamp	12V
Max Power	40W
LED Chip Brand	Bridgelux
Lumens (lm)	5,000 - 5,400lm
Color Temperature	6000K - 6500K
Life time (hours)	100,000

### Solar Charge and Lighting Radius

Viewing Angle	120°
Charge Time By Sun (hours)	6
Full-Power Discharge Time (hours)	>48
Half-Power Discharge Time (hours)	>72
Recommended Mounting Pole Height in (ft)	23 ft - 26 ft
Recommended Spacing Between Lights (ft)	60 ft - 65 ft
Radius of Area Lit	1,431ft <sup>2</sup>

The following data technical sheet contains general descriptions and statistics of the stated product mentioned above. SAT Energy Inc. is not liable nor responsible for any misinterpretation of the following data technical sheet. It is the responsibility of the user to review over the data technical sheet to evaluate and determine whether the stated product will match with the needs of the user.



# 50W Style 1 Intelligent Solar LED Light

## Technical Specifications



### Product Size

Product Size in (in)	46 in x 15 in x 5 in
Product Weight in (lbs)	46 lbs

### Product Features

Product Material	Aluminum Alloy
Infrared Motion Sensor	Yes
LED Light Remote Control Activation	Yes
Working Temperature Range	-22° to 158° F
Certificate	CE / ROHS / IP65
Product Warranty	5 Years



### Solar Panel

Solar Panel	18V
Max Power	70W
Solar Panel Lifetime	25 Years
Lithium Battery	12V / 36AH
Battery Lifetime	5 Years

### LED Light

LED Lamp	12V
Max Power	50W
LED Chip Brand	Bridgelux
Lumens (lm)	6,250 - 6,750lm
Color Temperature	6000K - 6500K
Life time (hours)	100,000



### Solar Charge and Lighting Radius

Viewing Angle	120°
Charge Time By Sun (hours)	6
Full-Power Discharge Time (hours)	>48
Half-Power Discharge Time (hours)	>72
Recommended Mounting Pole Height in (ft)	23 ft - 26 ft
Recommended Spacing Between Lights (ft)	60 ft - 65 ft
Radius of Area Lit	2,164ft <sup>2</sup>

The following data technical sheet contains general descriptions and statistics of the stated product mentioned above. SAT Energy Inc. is not liable nor responsible for any misinterpretation of the following data technical sheet. It is the responsibility of the user to review over the data technical sheet to evaluate and determine whether the stated product will match with the needs of the user.



# 60W Style 1 Intelligent Solar LED Light

## Technical Specifications



### Product Size

Product Size in (in)	46 in x 18 in x 5 in
Product Weight in (lbs)	50 lbs

### Product Features

Product Material	Aluminum Alloy
Infrared Motion Sensor	Yes
LED Light Remote Control Activation	Yes
Working Temperature Range	-22° to 158° F
Certificate	CE / ROHS / IP65
Product Warranty	5 Years

### Solar Panel

Solar Panel	18V
Max Power	80W
Solar Panel Lifetime	25 Years
Lithium Battery	12V / 42AH
Battery Lifetime	5 Years

### LED Light

LED Lamp	12V
Max Power	60W
LED Chip Brand	Bridgelux
Lumens (lm)	7,500 - 8,100lm
Color Temperature	6000K - 6500K
Life time (hours)	100,000

### Solar Charge and Lighting Radius

Viewing Angle	120°
Charge Time By Sun (hours)	6
Full-Power Discharge Time (hours)	>24
Half-Power Discharge Time (hours)	>48
Recommended Mounting Pole Height in (ft)	23 ft - 30 ft
Recommended Spacing Between Lights (ft)	82 ft - 100 ft
Radius of Area Lit	2,164ft <sup>2</sup>

The following data technical sheet contains general descriptions and statistics of the stated product mentioned above. SAT Energy Inc. is not liable nor responsible for any misinterpretation of the following data technical sheet. It is the responsibility of the user to review over the data technical sheet to evaluate and determine whether the stated product will match with the needs of the user.



# 70W Style 1 Intelligent Solar LED Light

## Technical Specifications



### Product Size

Product Size in (in)	47 in x 18 in x 5 in
Product Weight in (lbs)	55 lbs

### Product Features

Product Material	Aluminum Alloy
Infrared Motion Sensor	Yes
LED Light Remote Control Activation	Yes
Working Temperature Range	-22° to 158° F
Certificate	CE / ROHS / IP65
Product Warranty	5 Years



### Solar Panel

Solar Panel	18V
Max Power	90W
Solar Panel Lifetime	25 Years
Lithium Battery	12V / 51AH
Battery Lifetime	5 Years

### LED Light

LED Lamp	12V
Max Power	70W
LED Chip Brand	Bridgelux
Lumens (lm)	8,750 - 9,450lm
Color Temperature	6000K - 6500K
Life time (hours)	100,000



### Solar Charge and Lighting Radius

Viewing Angle	120°
Charge Time By Sun (hours)	6
Full-Power Discharge Time (hours)	>24
Half-Power Discharge Time (hours)	>48
Recommended Mounting Pole Height in (ft)	23 ft - 33 ft
Recommended Spacing Between Lights (ft)	82 ft - 115 ft
Radius of Area Lit	2,734ft <sup>2</sup>

The following data technical sheet contains general descriptions and statistics of the stated product mentioned above. SAT Energy Inc. is not liable nor responsible for any misinterpretation of the following data technical sheet. It is the responsibility of the user to review over the data technical sheet to evaluate and determine whether the stated product will match with the needs of the user.



# 80W Style 1 Intelligent Solar LED Light

## Technical Specifications



### Product Size

Product Size in (in)	47 in x 18 in x 5 in
Product Weight in (lbs)	60 lbs

### Product Features

Product Material	Aluminum Alloy
Infrared Motion Sensor	Yes
LED Light Remote Control Activation	Yes
Working Temperature Range	-22° to 158° F
Certificate	CE / ROHS / IP65
Product Warranty	5 Years



### Solar Panel

Solar Panel	18V
Max Power	120W
Solar Panel Lifetime	25 Years
Lithium Battery	12V / 57AH
Battery Lifetime	5 Years

### LED Light

LED Lamp	12V
Max Power	80W
LED Chip Brand	Bridgelux
Lumens (lm)	10,000 - 10,800lm
Color Temperature	6500K - 7000K
Life time (hours)	100,000



### Solar Charge and Lighting Radius

Viewing Angle	120°
Charge Time By Sun (hours)	6
Full-Power Discharge Time (hours)	>24
Half-Power Discharge Time (hours)	>48
Recommended Mounting Pole Height in (ft)	23 ft - 33 ft
Recommended Spacing Between Lights (ft)	82 ft - 115 ft
Radius of Area Lit	2,734ft <sup>2</sup>

The following data technical sheet contains general descriptions and statistics of the stated product mentioned above. SAT Energy Inc. is not liable nor responsible for any misinterpretation of the following data technical sheet. It is the responsibility of the user to review over the data technical sheet to evaluate and determine whether the stated product will match with the needs of the user.



# 100W Style 1 Intelligent Solar LED Light

## Technical Specifications



### Product Size

Product Size in (in)	47 in x 18 in x 5 in
Product Weight in (lbs)	60 lbs

### Product Features

Product Material	Aluminum Alloy
Infrared Motion Sensor	Yes
LED Light Remote Control Activation	Yes
Working Temperature Range	-22° to 158° F
Certificate	CE / ROHS / IP65
Product Warranty	5 Years



### Solar Panel

Monocrystalline Solar Panel	18V
Max Power	130W
Solar Panel Lifetime	25 Years
Lithium Battery	12V / 63AH
Battery Lifetime	5 Years

### LED Light

LED Lamp	12V
Max Power	100W
LED Chip Brand	Bridgelux
Lumens (lm)	12,500 - 13,500lm
Color Temperature	6000K - 6500K
Life time (hours)	100,000



### Solar Charge and Lighting Radius

Viewing Angle	120°
Charge Time By Sun (hours)	6
Full-Power Discharge Time (hours)	>24
Half-Power Discharge Time (hours)	>48
Recommended Mounting Pole Height in (ft)	25 ft - 35 ft
Recommended Spacing Between Lights (ft)	82 ft - 115 ft
Radius of Area Lit	3,000ft <sup>2</sup>

The following data technical sheet contains general descriptions and statistics of the stated product mentioned above. SAT Energy Inc. is not liable nor responsible for any misinterpretation of the following data technical sheet. It is the responsibility of the user to review over the data technical sheet to evaluate and determine whether the stated product will match with the needs of the user.



# 10W Style 2 Intelligent Solar LED Light

## Technical Specifications



### Product Size

Product Size in (in)	20 in x 9 in x 6 in
Product Weight in (lbs)	16 lbs

### Product Features

Product Material	Aluminum Alloy
Infrared Motion Sensor	Yes
LED Light Remote Control Activation	No
Working Temperature Range	-13° to 149° F
Certificate	CE / ROHS / IP65
Product Warranty	5 Years

### Solar Panel

Monocrystalline Solar Panel	18V
Max Power	12W
Solar Panel Lifetime	25 Years
Lithium Battery	72WH
Battery Lifetime	5 Years



### LED Light

LED Lamp	12V
Max Power	10W
LED Chip Brand	Bridgelux
Lumens (lm)	1,000lm
Color Temperature	2500K - 6500K
Life time (hours)	50,000

### Solar Charge and Lighting Radius

Viewing Angle	120°
Charge Time By Sun (hours)	8
Full-Power Discharge Time (hours)	>24
Half-Power Discharge Time (hours)	>48
Recommended Mounting Pole Height in (ft)	10 ft - 13 ft
Radius of Area Lit	400ft <sup>2</sup>



The following data technical sheet contains general descriptions and statistics of the stated product mentioned above. SAT Energy Inc. is not liable nor responsible for any misinterpretation of the following data technical sheet. It is the responsibility of the user to review over the data technical sheet to evaluate and determine whether the stated product will match with the needs of the user.



# 20W Style 2 Intelligent Solar LED Light

## Technical Specifications



### Product Size

Product Size in (in)	32 in x 9 in x 6 in
Product Weight in (lbs)	16 lbs

### Product Features

Product Material	Aluminum Alloy
Infrared Motion Sensor	Yes
LED Light Remote Control Activation	No
Working Temperature Range	-13° to 149° F
Certificate	CE / ROHS / IP65
Product Warranty	5 Years

### Solar Panel

Monocrystalline Solar Panel	18V
Max Power	25W
Solar Panel Lifetime	25 Years
Lithium Battery	144WH
Battery Lifetime	5 Years



### LED Light

LED Lamp	12V
Max Power	20W
LED Chip Brand	Bridgelux
Lumens (lm)	2,000lm
Color Temperature	2700K - 6500K
Life time (hours)	50,000

### Solar Charge and Lighting Radius

Viewing Angle	120°
Charge Time By Sun (hours)	8
Full-Power Discharge Time (hours)	>24
Half-Power Discharge Time (hours)	>48
Recommended Mounting Pole Height in (ft)	10 ft - 14 ft
Radius of Area Lit	730ft <sup>2</sup>



The following data technical sheet contains general descriptions and statistics of the stated product mentioned above. SAT Energy Inc. is not liable nor responsible for any misinterpretation of the following data technical sheet. It is the responsibility of the user to review over the data technical sheet to evaluate and determine whether the stated product will match with the needs of the user.





# 30W Style 2 Intelligent Solar LED Light

## Technical Specifications



### Product Size

Product Size in (in)	43 in x 9 in x 6 in
Product Weight in (lbs)	21 lbs

### Product Features

Product Material	Aluminum Alloy
Infrared Motion Sensor	Yes
LED Light Remote Control Activation	No
Working Temperature Range	-13° to 149° F
Certificate	CE / ROHS / IP65
Product Warranty	5 Years

### Solar Panel

Monocrystalline Solar Panel	18V
Max Power	35W
Solar Panel Lifetime	25 Years
Lithium Battery	252WH
Battery Lifetime	5 Years

### LED Light

LED Lamp	12V
Max Power	30W
LED Chip Brand	Bridgelux
Lumens (lm)	3,000lm
Color Temperature	2700K - 6500K
Life time (hours)	50,000

### Solar Charge and Lighting Radius

Viewing Angle	120°
Charge Time By Sun (hours)	8
Full-Power Discharge Time (hours)	>24
Half-Power Discharge Time (hours)	>48
Recommended Mounting Pole Height in (ft)	13 ft - 14 ft
Radius of Area Lit	1,400ft <sup>2</sup>



The following data technical sheet contains general descriptions and statistics of the stated product mentioned above. SAT Energy Inc. is not liable nor responsible for any misinterpretation of the following data technical sheet. It is the responsibility of the user to review over the data technical sheet to evaluate and determine whether the stated product will match with the needs of the user.



# 50W Style 2 Intelligent Solar LED Light

## Technical Specifications



### Product Size

Product Size in (in)	62 in x 17 in x 9 in
Product Weight in (lbs)	24 lbs

### Product Features

Product Material	Aluminum Alloy
Infrared Motion Sensor	Yes
LED Light Remote Control Activation	No
Working Temperature Range	-13° to 149° F
Certificate	CE / ROHS / IP65
Product Warranty	5 Years

### Solar Panel

Monocrystalline Solar Panel	18V
Max Power	60W
Solar Panel Lifetime	25 Years
Lithium Battery	360WH
Battery Lifetime	5 Years

### LED Light

LED Lamp	12V
Max Power	50W
LED Chip Brand	Bridgelux
Lumens (lm)	5,000lm
Color Temperature	2700K - 6500K
Life time (hours)	50,000

### Solar Charge and Lighting Radius

Viewing Angle	120°
Charge Time By Sun (hours)	8
Full-Power Discharge Time (hours)	>24
Half-Power Discharge Time (hours)	>48
Recommended Mounting Pole Height in (ft)	13 ft - 20 ft
Radius of Area Lit	2,150ft <sup>2</sup>



The following data technical sheet contains general descriptions and statistics of the stated product mentioned above. SAT Energy Inc. is not liable nor responsible for any misinterpretation of the following data technical sheet. It is the responsibility of the user to review over the data technical sheet to evaluate and determine whether the stated product will match with the needs of the user.



# 80W Style 2 Intelligent Solar LED Light

## Technical Specifications



### Product Size

Product Size in (in)	77 in x 17 in x 9 in
Product Weight in (lbs)	30 lbs

### Product Features

Product Material	Aluminum Alloy
Infrared Motion Sensor	Yes
LED Light Remote Control Activation	No
Working Temperature Range	-13° to 149° F
Certificate	CE / ROHS / IP65
Product Warranty	5 Years

### Solar Panel

Monocrystalline Solar Panel	18V
Max Power	80W
Solar Panel Lifetime	25 Years
Lithium Battery	480WH
Battery Lifetime	5 Years



### LED Light

LED Lamp	12V
Max Power	80W
LED Chip Brand	Bridgelux
Lumens (lm)	8,000lm
Color Temperature	2700K - 6500K
Life time (hours)	50,000

### Solar Charge and Lighting Radius

Viewing Angle	120°
Charge Time By Sun (hours)	8
Full-Power Discharge Time (hours)	>24
Half-Power Discharge Time (hours)	>48
Recommended Mounting Pole Height in (ft)	20 ft - 26 ft
Radius of Area Lit	2,700ft <sup>2</sup>



The following data technical sheet contains general descriptions and statistics of the stated product mentioned above. SAT Energy Inc. is not liable nor responsible for any misinterpretation of the following data technical sheet. It is the responsibility of the user to review over the data technical sheet to evaluate and determine whether the stated product will match with the needs of the user.



# 15W Solar Security Light Technical Specifications



## Size

Product Size in (in)	45 in x 12 in x 2 in
Product Weight in (lbs)	40 lbs

## Solar Panel & LED Light

Solar Panel	18V
Max Power	60W
Solar Panel Lifetime	25 Years
Solar Panel Type	Monocrystal
Battery Type	Li-ion Battery 12V, 21AH
Battery Lifetime	5 - 8 Years
LED Lamp	12V
Max Power	15W
LED Chip Brand	Bridgelux
Emitting Color	Warm/Natural/Cool White
Lumen (lm)	1,500lm
Life time (hours)	50,000

## Solar Charge and Lighting Radius

Viewing Angle	120°
Charge Time By Sun (hours)	6
Working Time	5-7 Rainy Days (10-12 hours/day)
Recommended Mounting Pole Height in (ft)	10 ft - 13 ft
Recommended Spacing Between Lights (ft)	33 ft - 40 ft
Radius of Area Lit	678ft <sup>2</sup>
Working Temperature Range	-4° to 140° F
Certificate	CE / ROHS / IP65

## Features

Light Mode	Time Controlling Solution
Light Control	On and Off Automatically

The following data technical sheet contains general descriptions and statistics of the stated product mentioned above. SAT Energy Inc. is not liable nor responsible for any misinterpretation of the following data technical sheet. It is the responsibility of the user to review over the data technical sheet to evaluate and determine whether the stated product will match with the needs of the user.



# 20W Solar Security Light Technical Specifications



## Size

Product Size in (in)	45 in x 12 in x 2 in
Product Weight in (lbs)	40.4 lbs

## Solar Panel & LED Light

Solar Panel	18V
Max Power	60W
Solar Panel Lifetime	25 Years
Solar Panel Type	Monocrystal
Battery Type	Li-ion Battery 12V, 24AH
Battery Lifetime	5 - 8 Years
LED Lamp	12V
Max Power	20W
LED Chip Brand	Bridgelux
Emitting Color	Warm/Natural/Cool White
Lumen (lm)	2,000lm
Life time (hours)	50,000

## Solar Charge and Lighting Radius

Viewing Angle	120°
Charge Time By Sun (hours)	6
Working Time	5-7 Rainy Days (10-12 hours/day)
Recommended Mounting Pole Height in (ft)	16 ft - 20 ft
Recommended Spacing Between Lights (ft)	65 ft - 80 ft
Radius of Area Lit	775ft <sup>2</sup>
Working Temperature Range	-4° to 140° F
Certificate	CE / ROHS / IP65

## Features

Light Mode	Time Controlling Solution
Light Control	On and Off Automatically

The following data technical sheet contains general descriptions and statistics of the stated product mentioned above. SAT Energy Inc. is not liable nor responsible for any misinterpretation of the following data technical sheet. It is the responsibility of the user to review over the data technical sheet to evaluate and determine whether the stated product will match with the needs of the user.



# 30W Solar Security Light Technical Specifications



## Size

Product Size in (in)	45 in x 17 in x 2 in
Product Weight in (lbs)	50 lbs

## Solar Panel & LED Light

Solar Panel	18V
Max Power	80W
Solar Panel Lifetime	25 Years
Solar Panel Type	Monocrystal
Battery Type	Li-ion Battery 12V, 36AH
Battery Lifetime	5 - 8 Years
LED Lamp	12V
Max Power	30W
LED Chip Brand	Bridgelux
Emitting Color	Warm/Natural/Cool White
Lumen (lm)	3,000lm
Life time (hours)	50,000

## Solar Charge and Lighting Radius

Viewing Angle	120°
Charge Time By Sun (hours)	6
Working Time	5-7 Rainy Days (10-12 hours/day)
Recommended Mounting Pole Height in (ft)	16 ft - 20 ft
Recommended Spacing Between Lights (ft)	65 ft - 80 ft
Radius of Area Lit	1,431ft <sup>2</sup>
Working Temperature Range	-4° to 140° F
Certificate	CE / ROHS / IP65

## Features

Light Mode	Time Controlling Solution
Light Control	On and Off Automatically

The following data technical sheet contains general descriptions and statistics of the stated product mentioned above. SAT Energy Inc. is not liable nor responsible for any misinterpretation of the following data technical sheet. It is the responsibility of the user to review over the data technical sheet to evaluate and determine whether the stated product will match with the needs of the user.



# 40W Solar Security Light Technical Specifications



## Size

Product Size in (in)	45 in x 17 in x 2 in
Product Weight in (lbs)	50.7 lbs

## Solar Panel & LED Light

Solar Panel	18V
Max Power	90W
Solar Panel Lifetime	25 Years
Solar Panel Type	Monocrystal
Battery Type	Li-ion Battery 12V, 42AH
Battery Lifetime	5 - 8 Years
LED Lamp	12V
Max Power	40W
LED Chip Brand	Bridgelux
Emitting Color	Warm/Natural/Cool White
Lumen (lm)	4,000lm
Life time (hours)	50,000

## Solar Charge and Lighting Radius

Viewing Angle	120°
Charge Time By Sun (hours)	6
Working Time	5-7 Rainy Days (10-12 hours/day)
Recommended Mounting Pole Height in (ft)	16 ft - 20 ft
Recommended Spacing Between Lights (ft)	65 ft - 80 ft
Radius of Area Lit	775ft <sup>2</sup>
Working Temperature Range	-4° to 140° F
Certificate	CE / ROHS / IP65

## Features

Light Mode	Time Controlling Solution
Light Control	On and Off Automatically

The following data technical sheet contains general descriptions and statistics of the stated product mentioned above. SAT Energy Inc. is not liable nor responsible for any misinterpretation of the following data technical sheet. It is the responsibility of the user to review over the data technical sheet to evaluate and determine whether the stated product will match with the needs of the user.



# 50W Solar Security Light Technical Specifications



## Size

Product Size in (in)	48 in x 17 in x 15.6 in
Product Weight in (lbs)	73 lbs

## Solar Panel & LED Light

Solar Panel	18V
Max Power	100W
Solar Panel Lifetime	25 Years
Solar Panel Type	Monocrystal
Battery Type	Li-ion Battery 12V, 45AH
Battery Lifetime	5 - 8 Years
LED Lamp	12V
Max Power	50W
LED Chip Brand	Bridgelux
Emitting Color	Warm/Natural/Cool White
Lumen (lm)	5,000lm
Life time (hours)	50,000

## Solar Charge and Lighting Radius

Viewing Angle	120°
Charge Time By Sun (hours)	6
Working Time	5-7 Rainy Days (10-12 hours/day)
Recommended Mounting Pole Height in (ft)	23 ft - 27 ft
Recommended Spacing Between Lights (ft)	82 ft - 100 ft
Radius of Area Lit	2,164ft <sup>2</sup>
Working Temperature Range	-4° to 140° F
Certificate	CE / ROHS / IP65

## Features

Light Mode	Time Controlling Solution
Light Control	On and Off Automatically

The following data technical sheet contains general descriptions and statistics of the stated product mentioned above. SAT Energy Inc. is not liable nor responsible for any misinterpretation of the following data technical sheet. It is the responsibility of the user to review over the data technical sheet to evaluate and determine whether the stated product will match with the needs of the user.





# 60W Solar Security Light Technical Specifications



## Size

Product Size in (in)	48 in x 17 in x 15.6 in
Product Weight in (lbs)	75 lbs

## Solar Panel & LED Light

Solar Panel	18V
Max Power	110W
Solar Panel Lifetime	25 Years
Solar Panel Type	Monocrystal
Battery Type	Li-ion Battery 12V, 48AH
Battery Lifetime	5 - 8 Years
LED Lamp	12V
Max Power	60W
LED Chip Brand	Bridgelux
Emitting Color	Warm/Natural/Cool White
Lumen (lm)	6,000lm
Life time (hours)	50,000

## Solar Charge and Lighting Radius

Viewing Angle	120°
Charge Time By Sun (hours)	6
Working Time	5-7 Rainy Days (10-12 hours/day)
Recommended Mounting Pole Height in (ft)	26 ft - 30 ft
Recommended Spacing Between Lights (ft)	82 ft - 100 ft
Radius of Area Lit	2,164ft <sup>2</sup>
Working Temperature Range	-4° to 140° F
Certificate	CE / ROHS / IP65

## Features

Light Mode	Time Controlling Solution
Light Control	On and Off Automatically

The following data technical sheet contains general descriptions and statistics of the stated product mentioned above. SAT Energy Inc. is not liable nor responsible for any misinterpretation of the following data technical sheet. It is the responsibility of the user to review over the data technical sheet to evaluate and determine whether the stated product will match with the needs of the user.



# Security Camera Technical Specifications

## Security Camera

Pixels	1,100,000 Pixels
Interface	WIFI
Storage	32G TF Card

### Network Function:

1. Supports double stream monitor at the same time
2. Supports mobile phone use
3. Supports up to 6 users to monitor the IP Security Camera at the same time
4. Built-in Web Server, supports IE browse and parameter settings
5. Supports 802.11 b/g/n agreement, can use built-in wifi module
6. Supports four regional motion detection and alarm linkage call preset options

### Video Compression:

H.264 Main Profile and Baseline Profile compression algorithm

Allows for clearer images, less code flow, easy network transmission, and extra storage space



The following data technical sheet contains general descriptions and statistics of the stated product mentioned above. SAT Energy Inc. is not liable nor responsible for any misinterpretation of the following data technical sheet. It is the responsibility of the user to review over the data technical sheet to evaluate and determine whether the stated product will match with the needs of the user.



# 5W Resilient Solar Hog Light Technical Specifications



## Size

Product Size in (in)	17.7 in x 11 in x 2 in
Product Weight in (lbs)	10 lbs

## Solar Panel & LED Light

Solar Panel	18V
Max Power	10W
Solar Panel Lifetime	25 Years
Battery Type	4AH
Battery Warranty	5 Years
LED Lamp	12V
Max Power	5W
LED Chip Brand	Epistar
Lumen (lm)	675 - 850lm
Life time (hours)	50,000

## Solar Charge and Lighting Radius

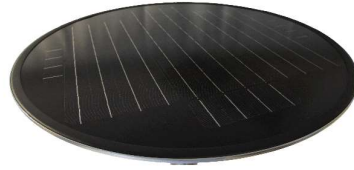
Viewing Angle	120°
Charge Time By Sun (hours)	12
Full-Power Discharge Time (hours)	>48
Half-Power Discharge Time (hours)	>72
Recommended Mounting Pole Height in (ft)	8 ft - 12 ft
Recommended Spacing Between Lights (ft)	23 ft - 30 ft
Radius of Area Lit	350ft <sup>2</sup>
Working Temperature Range	-22° to 158° F
Certificate	CE / ROHS / IP65

The following data technical sheet contains general descriptions and statistics of the stated product mentioned above. SAT Energy Inc. is not liable nor responsible for any misinterpretation of the following data technical sheet. It is the responsibility of the user to review over the data technical sheet to evaluate and determine whether the stated product will match with the needs of the user.



# 15W 360° Style 1 Intelligent Solar LED Light

## Technical Specifications



### Size

Product Size in (in)	22.4 in x 22.4 in x 9 in
Product Weight in (lbs)	17.6 lbs

### Solar Panel & LED Light

Solar Panel	18V
Max Power	30W
Solar Panel Lifetime	25 Years
Battery Type	Li-ion 144WH
Battery Warranty	5 Years
LED Lamp	9V
Max Power	15W
LED Chip Brand	Bridgelux
Lumen (lm)	1,500lm
Color Temperature	2,700K - 6,500K, Pure White
Life time (hours)	50,000

### Features

Light Mode	Time Controlling Solution
Light Control	On and Off Automatically

### Solar Charge and Lighting Radius

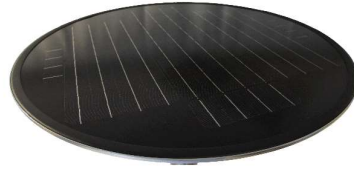
Viewing Angle	120°
Charge Time By Sun (hours)	8
Full-Power Discharge Time (hours)	>16
Half-Power Discharge Time (hours)	>32
Recommended Mounting Pole Height in (ft)	10 ft - 13 ft
Recommended Spacing Between Lights (ft)	33 ft - 40 ft
Radius of Area Lit	18 ft
Working Temperature Range	-4° to 140° F
Certificate	CE / ROHS / IP65

The following data technical sheet contains general descriptions and statistics of the stated product mentioned above. SAT Energy Inc. is not liable nor responsible for any misinterpretation of the following data technical sheet. It is the responsibility of the user to review over the data technical sheet to evaluate and determine whether the stated product will match with the needs of the user.



# 20W 360° Style 1 Intelligent Solar LED Light

## Technical Specifications



### Size

Product Size in (in)	26 in x 26 in x 9.5 in
Product Weight in (lbs)	22 lbs

### Solar Panel & LED Light

Solar Panel	18V
Max Power	40W
Solar Panel Lifetime	25 Years
Battery Type	Li-ion 320WH
Battery Warranty	5 Years
LED Lamp	9V
Max Power	20W
LED Chip Brand	Bridgelux
Lumen (lm)	2,000lm
Color Temperature	2,700K - 6500K, Pure White
Life time (hours)	50,000

### Features

Light Mode	Time Controlling Solution
Light Control	On and Off Automatically

### Solar Charge and Lighting Radius

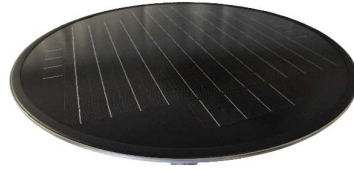
Viewing Angle	120°
Charge Time By Sun (hours)	9
Full-Power Discharge Time (hours)	>16
Half-Power Discharge Time (hours)	>32
Recommended Mounting Pole Height in (ft)	10 ft - 16 ft
Recommended Spacing Between Lights (ft)	30 ft - 40 ft
Radius of Area Lit	25 ft
Working Temperature Range	-4° to 140° F
Certificate	CE / ROHS / IP65

The following data technical sheet contains general descriptions and statistics of the stated product mentioned above. SAT Energy Inc. is not liable nor responsible for any misinterpretation of the following data technical sheet. It is the responsibility of the user to review over the data technical sheet to evaluate and determine whether the stated product will match with the needs of the user.



# 30W 360° Style 1 Intelligent Solar LED Light

## Technical Specifications



### Size

Product Size in (in)	30 in x 30 in x 9.8 in
Product Weight in (lbs)	35.3 lbs

### Solar Panel & LED Light

Solar Panel	18V
Max Power	60W
Solar Panel Lifetime	25 Years
Battery Type	Li-ion 420WH
Battery Warranty	5 Years
LED Lamp	9V
Max Power	30W
LED Chip Brand	Bridgelux
Lumen (lm)	3,000lm
Color Temperature	2,700K - 6500K, Pure White
Life time (hours)	50,000

### Features

Light Mode	Time Controlling Solution
Light Control	On and Off Automatically

### Solar Charge and Lighting Radius

Viewing Angle	120°
Charge Time By Sun (hours)	12
Full-Power Discharge Time (hours)	>16
Half-Power Discharge Time (hours)	>32
Recommended Mounting Pole Height in (ft)	13 ft - 20 ft
Recommended Spacing Between Lights (ft)	33 ft - 40 ft
Radius of Area Lit	40 ft
Working Temperature Range	-4° to 140° F
Certificate	CE / ROHS / IP65

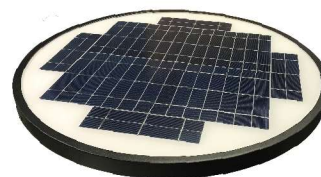
The following data technical sheet contains general descriptions and statistics of the stated product mentioned above. SAT Energy Inc. is not liable nor responsible for any misinterpretation of the following data technical sheet. It is the responsibility of the user to review over the data technical sheet to evaluate and determine whether the stated product will match with the needs of the user.



SAT ENERGY

# 15W 360° Style 2 Intelligent Solar LED Light

## Technical Specifications



### Size

Product Size in (in)	20 in x 20 in x 9 in
Product Weight in (lbs)	22 lbs

### Solar Panel & LED Light

Solar Panel	18V
Max Power	25W
Solar Panel Lifetime	25 Years
Battery Type	12V / 10AH
Battery Warranty	5 Years
LED Lamp	9V
Max Power	15W
LED Chip Brand	Bridgelux
Lumen (lm)	1,500 - 1,650lm
Color Temperature	Warm White/ Natural White
Life time (hours)	50,000

### Features

Light Mode	Time Controlling Solution
Light Control	On and Off Automatically

### Solar Charge and Lighting Radius

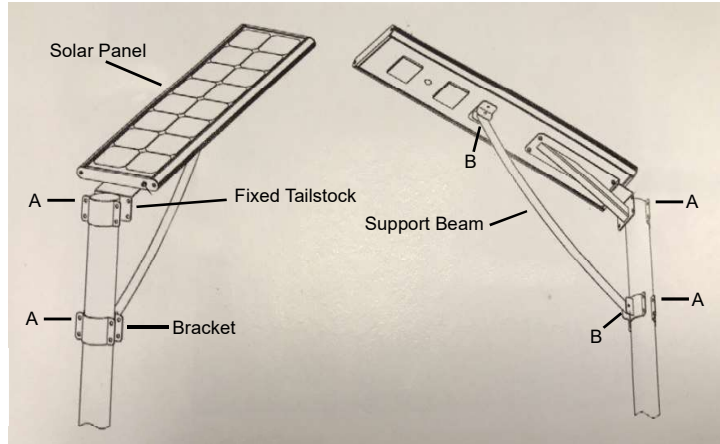
Viewing Angle	120°
Charge Time By Sun (hours)	8
Full-Power Discharge Time (hours)	>16
Half-Power Discharge Time (hours)	>32
Recommended Mounting Pole Height in (ft)	13 ft - 16 ft
Recommended Spacing Between Lights (ft)	33 ft - 40 ft
Radius of Area Lit	16 ft
Working Temperature Range	-4° to 140° F
Certificate	CE / ROHS / IP65

The following data technical sheet contains general descriptions and statistics of the stated product mentioned above. SAT Energy Inc. is not liable nor responsible for any misinterpretation of the following data technical sheet. It is the responsibility of the user to review over the data technical sheet to evaluate and determine whether the stated product will match with the needs of the user.



# Intelligent Solar LED Light Brackets and Mounts

The following Bracket and Mounting Equipment is for the Style 1 Intelligent Solar LED Lights from the 20W to the 80W and for the Solar Security Camera Light from the 15W to the 40W.



The Intelligent Solar LED Light includes several installation components that will allow the user to place the lights onto a pole fixture or on a similar structure for easy support.

- 10 Assembling Bolts (8-5" Bolts, 2-3" Bolts)
- 10 Gaskets
- 10 Nuts
- 10 Washers
- 1 Support Beam
- 3 Brackets (1 Bracket that connects with the Long Support Beam)

Use the eight 5" Bolts for the Bracket holes designated as A.

Use the two 3" Bolts for the Support Beam holes designated as B.

The Brackets and Mounting Equipment for the Intelligent Solar LED Lights will work best with a pole of at least 3 inches in diameter.

