



SPECIFICATIONS

16 INCH DRY PRIME

Premier Pump Model 18x16CS3-WP-6135HF485-100

Vacuum Assisted, Engine Driven, Heavy Duty Solids Handling Pump

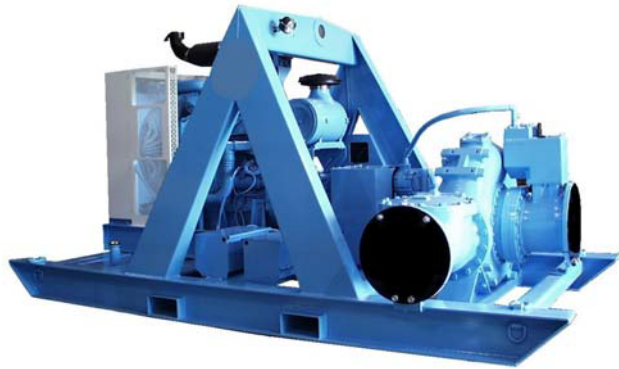
Pump Specifications:

- Pump size: 18"X 16" AISI 150# flanges standard
- Suction Cover: ASTM A48 class 30 gray iron
- Wear Ring: ASTM A48 class 30 gray iron
- Volute Casing: ASTM A48 class 30 gray iron
- Volute Cleanout: ASTM A48 class 30 gray iron
- Backplate: ASTM A48 class 30 gray iron
- Bracket: ASTM A48 class 30 gray iron
- Mechanical Seal: Tungsten vs. Silicon Carbide seal faces, Viton elastomers, 300 series stainless steel hardware & spring, seal system designed for dry running
- Impeller: Enclosed type, two port, non clog, w/4.5 inch spherical solids handling capability. ASTM A48 class 30 gray iron
- Bearing Housing: ASTM A48 class 30 gray iron
- Pump-end Bearing: Single row ball – 6313-C3
- Drive-end Bearings: Double row ball – 7316-C3
- Shaft: 17-4 PH corrosion resistant
- Lip Seals: CR type, single lip: Bearings, SAE cover - Buna-N, Seal gland – Viton
- Utile 60 CFM rotary vane vacuum pump
- Separator Spool: Large capacity fabricated steel
- Air/Water chamber: Bolted to suction spool/volute of centrifugal pump, chamber designed to separate air and water before entering the pump case.
- Oil Coalescer: Close grain aluminum with extra large oil capacity and over 2 square feet of condensing area
- Discharge check valve: Swing type, cast iron w/Buna-N disc (Viton optional)

Optional Equipment and Materials: Stainless Steel, CD4MCU & Ductile Iron

Engine Specification:

- Model: John Deere model 6135HF485
- 425 continuous horsepower @ 2200 RPM
- Six cylinder, four cycle, water cooled diesel engine
- Governor: Mechanical
- Lubrication: Force Feed
- Air Cleaner: Filter element
- Fuel Tank: 100 US gallons
- Run time: Full load (1800 RPM) ~ 5 hours
- Starter: 12 volt electric



Standard engine features: Safety shutdown switches for low oil pressure and high temperature. Instrument panel with temperature and oil pressure gauge, ampmeter, hourmeter and tachometer. Muffler with rain cap. Engine to pump coupling: SAE2 housing with 14" rubber disc drive.

Standard Skid: Heavy duty fabricated steel frame. Integral fuel tank, lifting barge, lockable fuel tank, and one 1½" clean-out/drain plug

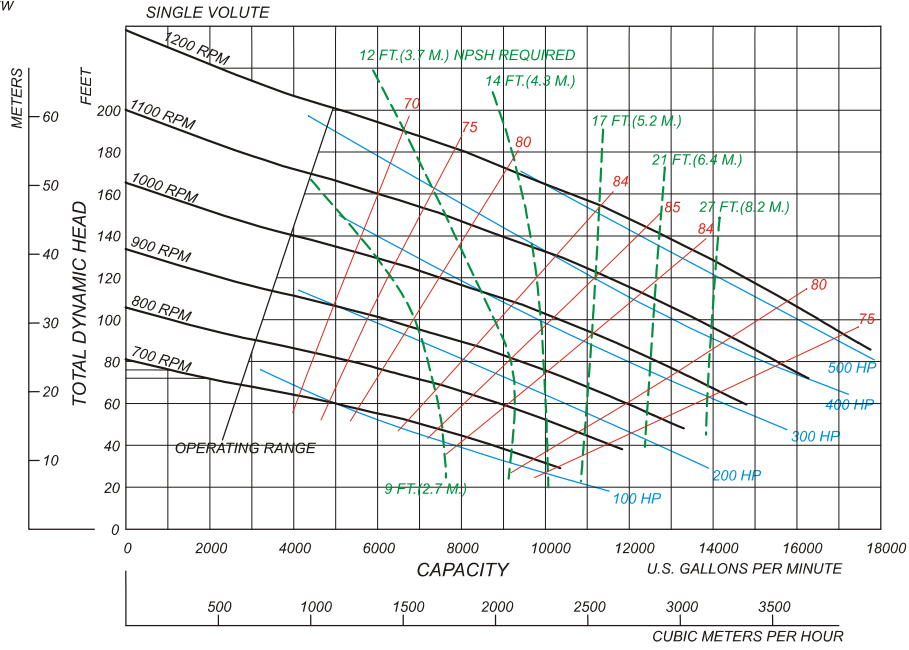
Standard Trailer: Heavy duty fabricated steel frame, integral fuel tank, fenders, lifting barge, lockable fuel cap, dual 8000# Anti-torsional axles, three (3) front adjustable leveling jacks and two (2) rear adjustable leveling jacks, one 1½" clean-out plug, fuel gauge, adjustable height tongue with easy conversion from ball hitch to Lunette eye

Trailer Options: DOT light package, work lights, special tires & wheels, diamond plate fenders, surge brakes, lockable enclosed instrument panel, lockable enclosed engine housing, storage box, hose rack and more



Feet x .305 = Meters
 Inches x 25.4 = Millimeters
 GPM x .227 = Cubic Meters/Hour
 GPM x 3.785 = Liters/Minute
 HP x .746 = KW

Speed	Impeller Dia.	Style	Solids Dia.	N _S	Suction	Discharge	No. vanes
VARIOUS	22"	ENCLOSED	4.5"	3300	18"	16"	3



9/25/00

18x16CS322



JOHN DEERE

ENGINE PERFORMANCE CURVE

Rating: Gross Power
 Application: Industrial - Continuous
 Power Bulge - 6%
 Torque Rise - 43%

PowerTech Plus™ 13.5 L Engine

Model: **6135HF485**

JD Electronic Control

425 hp @ 2100 rpm

317 kW @ 2100 rpm

[See Option Code Table]

STANDARD CONDITIONS

Air Intake Restriction 12 in.H₂O (3 kPa)
 Exhaust Back Pressure 30 in.H₂O (7.5 kPa)

Gross power guaranteed within + or - 5% at SAE J1995 and ISO 3046 conditions:

- 77 °F (25 °C) air inlet temperature
- 29.31 in.Hg (99 kPa) barometer
- 104 °F (40 °C) fuel inlet temperature
- 0.853 fuel specific gravity @ 60 °F (15.5 °C)

Conversion factors:

- Power: kW = hp x 0.746
- Fuel: 1 gal = 7.1 lb, 1 L = 0.85 kg
- Torque: N•m = lb-ft x 1.356

All values are from currently available data and are subject to change without notice.

Notes:

Tier-3 Emission Certifications:

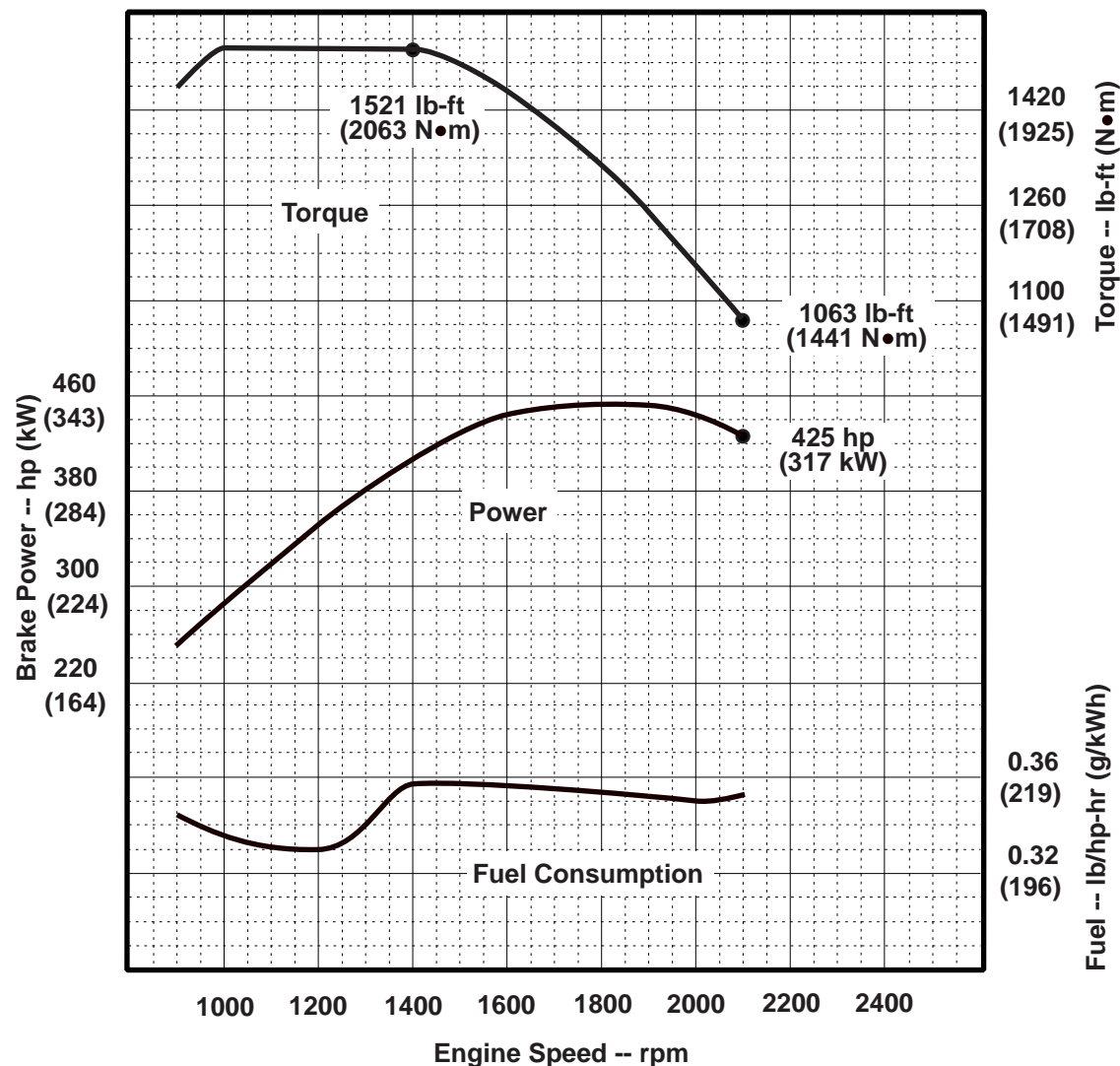
Certified by:

CARB; EPA; EU
 Ref: Engine Emission Label

Brian L. Carlson
 26 April 2006

* Revised Data

Curve: 6135HF485425_2100_6_43 Sheet 1 of 2
 April 2006



Engine Installation Criteria

General Data

Model 6135HF485
 Number of Cylinders 6
 Bore and Stroke--in. (mm)..... 5.20 (132) x 6.50 (165)
 Displacement--in.³ (L)824 (13.5)
 Compression Ratio 16.0 : 1
 Valves per Cylinder--Intake/Exhaust 2 / 2
 Firing Order..... 1-5-3-6-2-4
 Combustion System..... Unit Injection
 Engine Type In-line, 4-Cycle
 Aspiration Turbocharged
 Charge Air Cooling System..... Air-to-Air
 Engine Crankcase Vent System Open

Physical Data

Length--in. (mm)52.5 (1334)
 Width--in. (mm)33.7 (855)
 Height--in. (mm)59.5 (1512)
 Weight, dry--lb (kg)3292 (1493)
 (Includes flywheel housing, flywheel & electrics)
 Center of Gravity Location
 From Rear Face of Block (X-axis)--in. (mm) 20.0 (507)
 Right of Crankshaft (Y-axis)--in. (mm).....0.1 (2)
 Above Crankshaft (Z-axis)--in. (mm)8.1 (206)
 Maximum Allowable Static Bending Moment at Rear Face
 of Flywhl Hsg w/ 5-G Load--lb-ft (N•m)600 (814)
 Thrust Bearing Load Limit --lb (N) Forward Rearward
 Intermittent..... 1821 (8100).....899 (4000)
 Continuous 1214 (5400).....562 (2500)
 Max. Continuous Damper Temp--°F (°C)180 (82)

Electrical System

12 Volt **24 Volt**

Min. Battery Capacity (CCA)--amp..... 1900 925
 Max. Allow. Starting Circuit Resist.--Ohm 0.0012 0.002
 Starter Rolling Current
 At 32 °F (0 °C)--amp 920 600
 At -22 °F (-30 °C)--amp 1300 700
 Min. Voltage at ECU during Cranking--volts..... 6 10
 Maximum ECU Temperature--°F (°C)221 (105)
 Max. VTG Actuator Surface Temp.--°F (°C)356 (180)
 Maximum Harness Temperature--°F (°C)257 (125)

Air System

Maximum Allowable Temp Rise--Ambient Air to
 Engine Inlet--°F (°C) 15 (8)
 Maximum Air Intake Restriction:
 Dirty Air Cleaner--in. H₂O (kPa).....25 (6.25)
 Clean Air Cleaner--in. H₂O (kPa).....15 (3.75)
 Engine Air Flow--ft³/min (m³/min) 1059 (30.0)
 Air Cleaner Efficiency--% 99.9

Charge Air Cooling System

Air/Air Exch'r. Heat Rej.--Btu/min(kW) 4041 (71)
 Compressor Discharge Temp.(Rated)
 @ 77 °F (25°C) Ambient Air--°F (°C)..... 361 (183)
 Compressor Discharge Temp.(Max.) @ Peak Torque,
 47°C ambient, 80 kPa barometer--°F (°C)..... 451 (233)
 Max. Pressure Drop, thru CAC--in.H₂O (kPa) 64 (16)
 Min. Pressure Drop, thru CAC--in.H₂O (kPa) 32 (8)
 Intake Manifold Pressure--psi (kPa) 25 (175)
 Max CAC Out Temp @ 77°F (25°C) Amb.--°F (°C) 127(53)
 Min CAC Out Temp @ 77°F (25°C) Amb.--°F (°C) 108(42.3)
 Max CAC Out Temp @ any Ambient--°F (°C) 190(88)

Cooling System

Engine Heat Rejection--BTU/min (kW) 9392 (165)
 Coolant Flow--gal/min (L/min)..... 146 (552)
 Thermostat Start to Open--°F (°C)..... 180 (82)
 Thermostat Fully Open--°F (°C)..... 198 (92)
 Engine Coolant Capacity--qt (L) 19 (18)
 Minimum Pressure Cap--psi (kPa)..... 14.5 (100)
 Maximum Top Tank Temp--°F (°C) 221 (105)
 Minimum Coolant Fill Rate--gal/min (L/min) 3 (12)
 Minimum Air-to-Boil Temperature--°F (°C)..... 117 (47)
 Minimum Pump Inlet Pressure--psi (kPa) 4.4 (30)

Exhaust System

Exhaust Flow--ft³/min (m³/min)..... 2225 (63)
 Exhaust Temperature--°F (°C)..... 761 (405)
 Max. Exhaust Restriction--in. H₂O (kPa) 40 (10)
 Min. Exhaust Restriction--in. H₂O (kPa) 16 (4)
 Max. Bend. Moment on Turbo Out.--lb-ft (N•m) 5.2 (7)
 Max. Shear on Turbo Outlet--lb (kg) 24 (11)

Fuel System

ECU Description L15 Controller
 Fuel Injection Pump Unit Injection
 Governor Type Electronic
 Total Fuel Flow--lb/hr (kg/hr) 304 (138)
 Fuel Consumption--lb/hr (kg/hr)..... 150 (68)
 Max. Fuel Inlet Temperature--°F (°C) 212 (100)
 Fuel Temp. Rise, Inlet to Return--°F (°C) 109.8 (61)
 Max. Fuel Inlet Restriction--in. H₂O (kPa) 40 (10)
 Max. Fuel Inlet Pressure--in. H₂O (kPa) 96 (24)
 Max. Fuel Return Pressure--in. H₂O (kPa) 140 (35)

Lubrication System

Oil Pressure at Rated Speed--psi (kPa) 45 (310)
 Oil Pressure at Low Idle--psi (kPa) 20 (138)
 Max. Oil Carryover in Blow-by--lb/hr (g/hr) 0.007 (3)
 Max. Airflow in Blow-by--gal/min (l/min)..... 79 (300)
 Max. Crankcase Pressure--in. H₂O (kPa)..... 2 (0.5)

Performance Data

Rated Power--hp (kW) 425 (317)
 Rated Speed--rpm 2100
 Breakaway Speed--rpm 2150
 Fast Idle Speed--rpm 2300
 Peak Torque--lb-ft (N•m)..... 1521 (2063)
 Peak Torque Speed--rpm 1400
 Low Idle Speed--rpm 900
 BMEP--psi (kPa)..... 195 (1342)
 Friction Power @ Rated Speed--hp (kW) 78 (58)
 Altitude Capability--ft (m) 10,000 (3050)
 Ratio--Air : Fuel 28.2 : 1
 Smoke @ Rated Speed--Bosch No. 0.45
 Noise--dB(A) @ 1 m 99.7*
 Power Bulge--% 6
 Power Bulge Speed--rpm 1900
 Torque Rise--% 43

Continuous Power

Engine Speed rpm	Power hp (kW)	Torque lb-ft (N•m)	BSFC lb/hp-hr (g/kWh)
2100	425 (317)	1063 (1441)	0.352 (214)
2000	440 (328)	1154 (1565)	0.350 (213)
1800	450 (336)	1316 (1785)	0.354 (216)
1600	443 (330)	1454 (1971)	0.356 (217)
1400	406 (302)	1521 (2063)	0.358 (218)
1200	348 (259)	1521 (2063)	0.331 (201)
1000	290 (216)	1521 (2063)	0.336 (205)
900	250 (187)	1460 (1980)	0.344 (209)

All values at rated speed and power with standard options unless otherwise noted.

* Revised Data
 Curve: 6135HF485425_2100_6_43 Sheet 2 of 2
 April 2006